

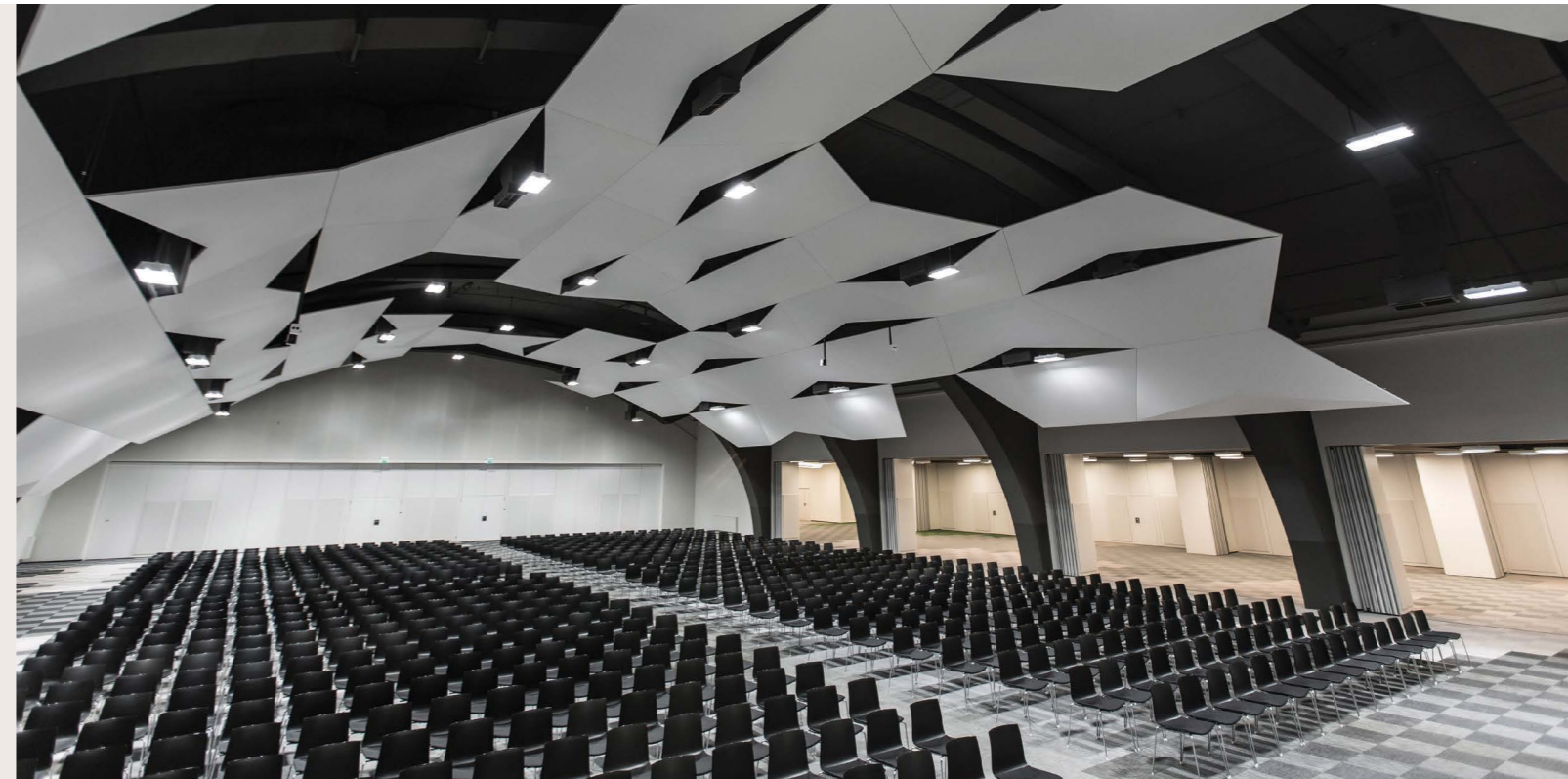


## MALTA

InterContinental Meetings strive to capture a genuine sense of place and shared experience, in order to inspire meetings that truly engage delegates and get results. Our success is founded on delivering a seamless service in environments that inspire delegates to connect with their surroundings and each other. Whatever the event, the InterContinental Meetings team understands what it takes to make life easier for the planner and create a memorable and highly rewarding occasion for those attending.



InterContinental Malta has established itself as the Mediterranean's leading hotel of distinction, exemplifying elegance and modern hospitality, while defining the essence of new luxury in Malta. Conveniently and centrally located in the prime area of St. George's Bay, the hotel provides the space to unlock the vibrant lifestyle and culture of the islands. All 481 bedrooms offer a masterpiece of chic and stylish design in a relaxed atmosphere. The Presidential Suite and Highline Suites are located on the hotel's upper floors. Here, guests can experience a range of exclusive services at Club InterContinental lounge, with its stunning views across the islands.



## HOTEL FACILITIES

InterContinental Malta offers supreme comfort, impeccable service and an array of leisure and meeting facilities, complemented by six restaurants and six bars that offer varied local and international cuisine at all times of day, whether seeking to dine by the seaside, indoor, al fresco or in the room. Leisure facilities are abundant with a panoramic lagoon styled outdoor pool, rooftop infinity pool, a heated indoor pool, state of the art fitness centre with squash courts and aerobics studio, a spa with traditional Turkish hamam and a hair salon. InterContinental Beach Club includes an exclusive sandy beach area and incorporates an array of amenities including a beach bar and a restaurant.

## MEETINGS & EVENTS

The hotel's meeting space totals 6,000 square metres, including the InterContinental Arena Conference Centre, one of the largest indoor venues in the Mediterranean, with a capacity of 1,700 delegates in theatre style, 960 seated for a gala dinner and ample foyer space for exhibitions.

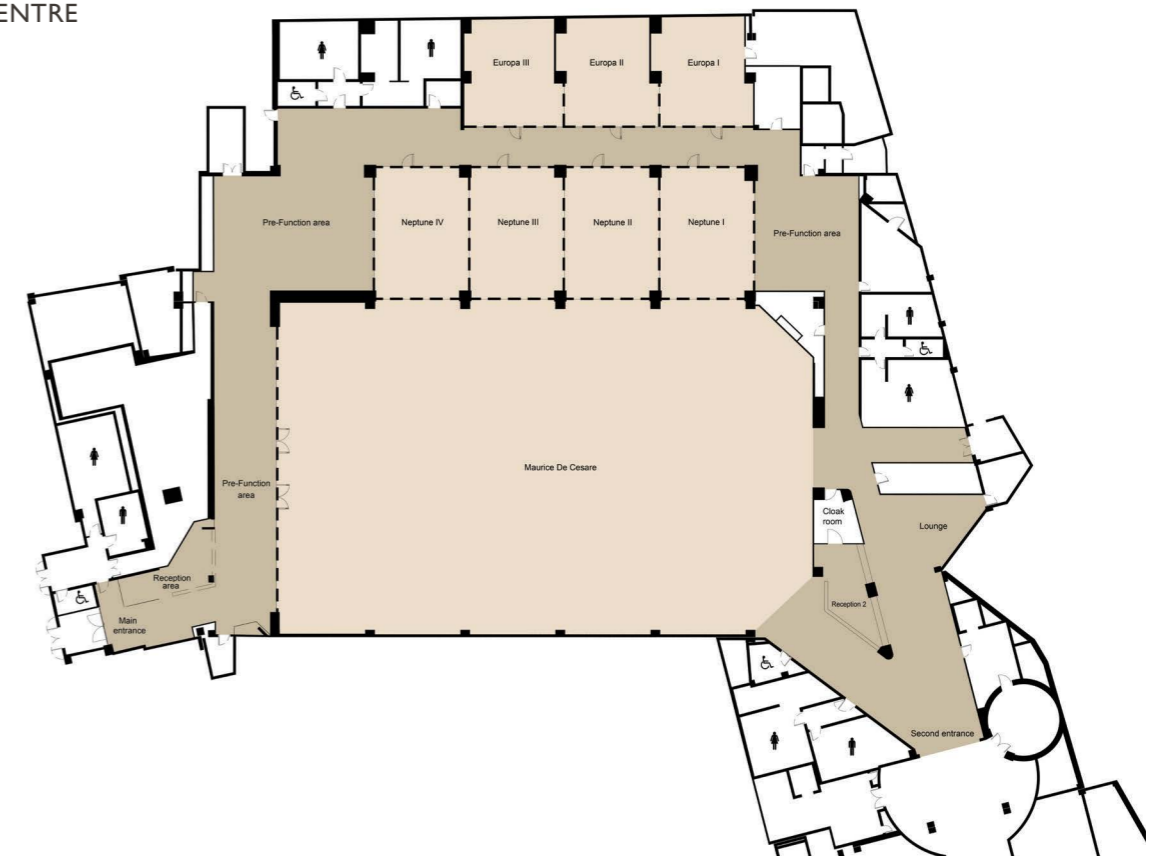
The hotel's 24 separate meeting rooms provide a variety of capacities in various seating arrangements. Business services and facilities are state of the art offering total connectivity with Internet speeds of up to 100Mbps, provided upon request.

A separate entrance for large groups, private check-in, reception desks and direct and easy access from the car park ensures the efficient set up of additional conference furniture and audiovisual equipment. The hotel caters and provides for any number between two and two thousand, always with an authentic local touch.

## A PERSONAL, RESPONSIVE SERVICE

InterContinental Meetings are delivered by a highly trained team focused on understanding your needs and staging an event that is tailored to you. Every element of our service and technology is designed to simplify the event planning process, from fast availability checks and transparent pricing, to the latest technology tools such as virtual tours and fully interactive floor plans, that can be customised to each event.

INTERCONTINENTAL ARENA  
CONFERENCE CENTRE  
FOURTH FLOOR



**CETTINA DE CESARE  
SECOND FLOOR**



**INSIDER COLLECTION**

Our Insider Collection allows you to benefit from the hotel's unrivalled local knowledge. Often inspired by the destination itself, these experiences can be tailored to any event or meeting, ensuring that it delivers results and creates an experience to remember.

**INSIDER LOCATIONS**

Insider Locations give you an opportunity to base some of your event away from the hotel. We offer exclusive access to a variety of venues and experiences, allowing delegates to experience a side of the destination that visitors rarely see.

**INSIDER SPEAKERS**

A well-chosen speaker can bring your event to life and really inspire your delegates. Insider Speakers range from celebrities and cultural experts to sporting heroes, all of whom have a local connection.

**INSIDER COMMUNITY**

Insider Community events allow delegates to make a positive difference to the community they are visiting. It could be anything from painting a mural at a local school to preparing lunch in a homeless shelter.

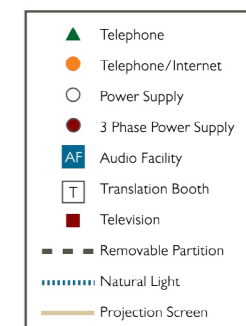
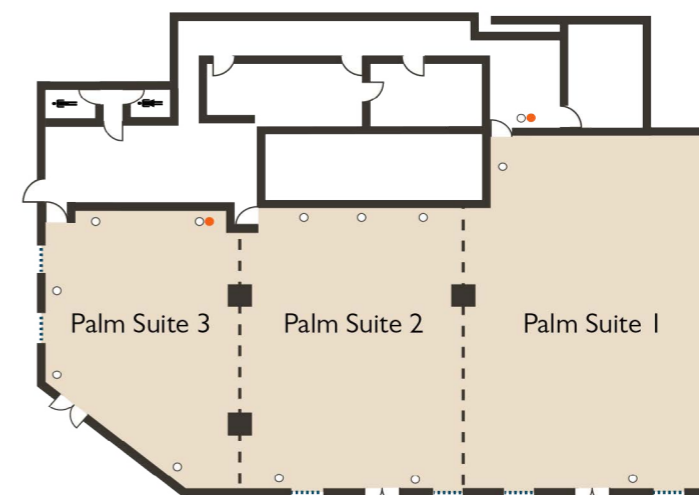
**INSIDER INTERACTIONS**

We offer a range of team-building experiences which can be based on-site or in the local area. They are an original way to engage and motivate delegates while giving them a chance to interact with their destination.

**INSIDER BREAKS**

With Insider Breaks, a few minutes out of a busy day can become a whole experience in itself. It could be a talk from the concierge on local sights or a live cooking station hosted by the chef and showcasing local recipes.

**PALM SUITE  
SEVENTH FLOOR**



Name of Room	Theatre Style	Classroom	Cocktail Reception	Banquet (12 persons)	U-Shape	Block Table	Size	Length x Width (m)	Height (m)	Floor
InterContinental Arena Conference Centre	-	-	3,600	-	-	-	3,600	-	3.6x8.4	4
Maurice De Cesare	1,700	900	2,500	960	250	-	1,215	45 x 27	5.7x8.4	4
Maurice De Cesare foyer	-	-	1,700	-	-	-	800	-	4.1	4
Neptune	250	140	300	190	42	38	341	31x11	3.6-4.2	4
Neptune I	60	30	-	36	18	14	88	8x11	3.6-4.2	4
Neptune II	60	30	-	36	18	14	88	8x11	3.6-4.2	4
Neptune III	60	30	-	36	18	14	88	8x11	3.6-4.2	4
Neptune IV	60	30	-	36	18	14	88	8x11	3.6-4.2	4
Europa	-	-	150	-	-	-	225	24.4x9.24	3.6-4.2	4
Europa I	40	18	-	-	14	12	72	7.8x9.2	3.6-4.2	4
Europa II	40	15	-	-	14	12	72	7.8x9.2	3.6-4.2	4
Europa III	40	15	-	-	14	12	72	7.8x9.2	3.6-4.2	4

Name of Room	Theatre Style	Classroom	Cocktail Reception	Banquet (12 persons)	U-Shape	Block Table	Size (m²)	Length x Width (m)	Height (m)	Floor
Cettina De Cesare	650	420	1,000	540	123	120	600	40 x 15	4.1	2
Cettina De Cesare I	160	72	240	132	35	24	174	11.6 x 15	4.1	2
Cettina De Cesare II	300	250	500	216	51	42	248	16.5 x 15	4.1	2
Cettina De Cesare III	160	72	240	132	35	24	174	11.6 x 15	4.1	2
Palm Suite	120	72	320	250	60	-	375	27.6 x 19.8	2.5	7
Palm Suite I	100	54	120	96	30	30	140	16 x 8.8	2.5	7
Palm Suite II	80	48	120	96	30	27	124	12.4 x 10	2.5	7
Palm Suite III	60	27	80	72	18	18	110	12.4 x 8.9	2.5	7
Saturn	60	48	60	60	30	45	116	11.6 x 10	3.8	2
Saturn I	30	24	30	24	21	21	58	5.8 x 10	3.8	2
Saturn II	30	24	30	24	21	21	58	5.8 x 10	3.8	2
Jupiter	60	36	60	48	24	24	76	8.5 x 9	3.8	2
Odyssey	15	9	20	12	15	12	28	3.8 x 7.9	2.4	5
Apollo	15	9	20	12	15	18	30	3.8 x 7.4	2.4	5
Mercury	15	9	20	12	15	18	30	3.8 x 7.4	2.4	5
Mars	70	30	150	84	30	30	139	13 x 10.7	3.9	8
Venus	100	78	150	120	36	36	124	15.3 x 8.1	4.4	8
Venus I	48	36	70	60	27	18	62	7.7 x 8.1	4.4	8
Venus II	48	36	70	60	27	18	61	7.5 x 8.1	4.4	8
Executive Boardroom	30	-	-	-	-	20	112	15.5x7.2	3.8	17



